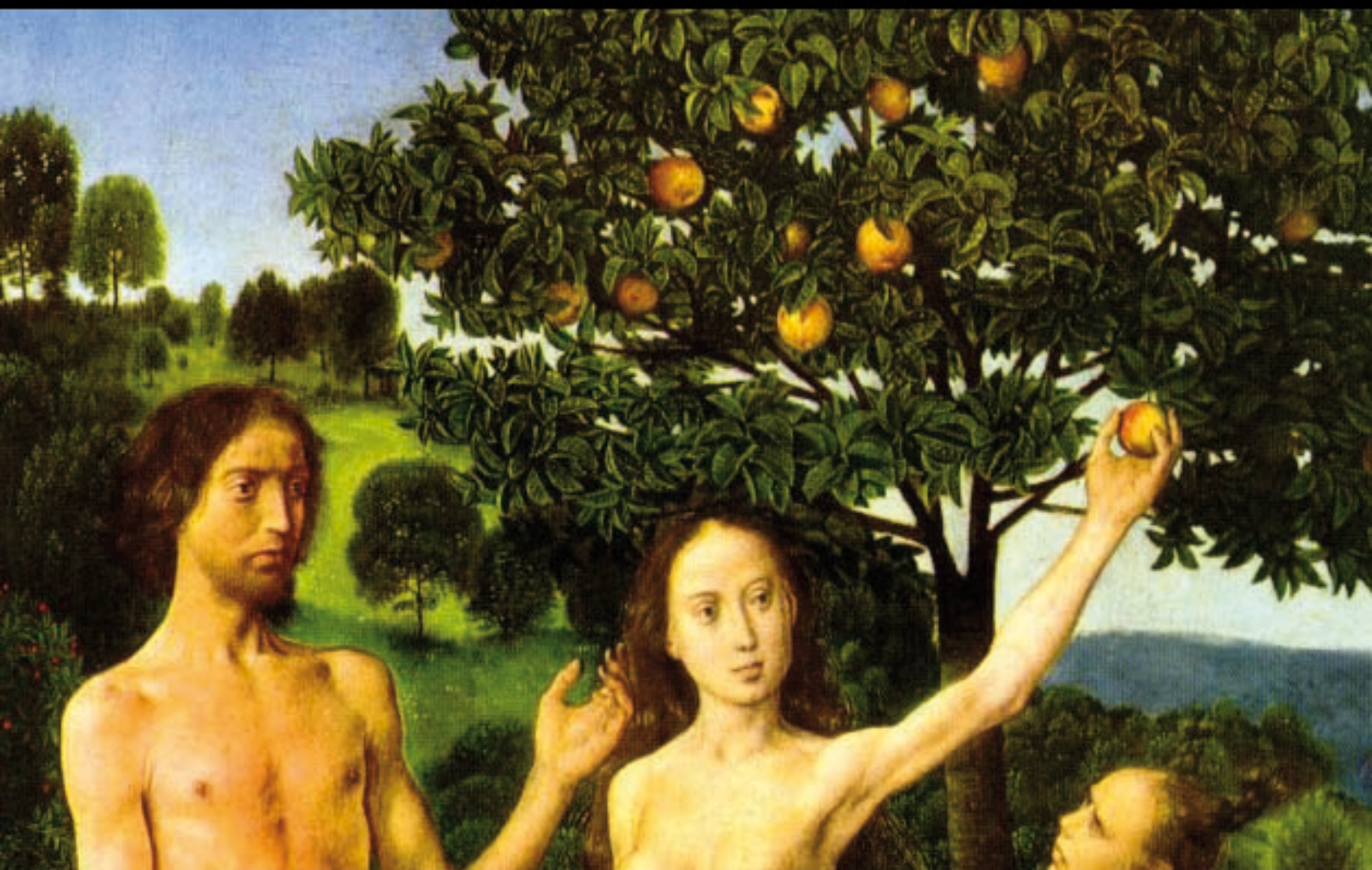


# Shame between punishment and penance

## The social usages of shame in the Middle Ages and Early Modern times



**Paris Ouest Nanterre / DHIP / Inst. de France**

**October 21-23, 2010**

**International conference organised by  
Bénédicte Sère & Jörg Wettlaufer**

**in collaboration with Paris Ouest Nanterre &  
Deutsches Historisches Institut Paris (DHIP) &  
Institut de France - Fondation del Duca**

[www.shamestudies.de/paris](http://www.shamestudies.de/paris)

